



# GROWING INTO ECO-CONSCIOUS ADULTS

## ArcGIS Survey 123



## Sustainability Toolkit

2022-1-IT02-KA220-ADU-000087270

<https://geaeducation.eu>



Co-funded by  
the European Union

The European Commission's support for the production of this publication does not constitute an endorsement of the contents, which reflect the views only of the authors, and the Commission cannot be held responsible for any use which may be made of the information contained therein.

# 1 Introduction to ArcGIS Survey 123 and URL

ArcGIS Survey123 allows users to enable data collection and enhance the quality of results. The data can then be visualised and analysed with a geographic lens to better understand where and why things occur. The data can also be shared through web maps, apps, and dashboards to inform decision-making and improve processes.

There is a free trial version which allows you to gather data. Schools and non-profits can get free full licences to use.

<https://www.esri.com/en-us/arcgis/products/arcgis-survey123/trial>

## 2 Classification

<i>Classification Tag</i>	<b>Mark X if applies</b>	<b>Criteria</b>
Purpose of tool	X	Water saving
	X	Energy saving
	X	Smart shopping / food planning
	X	Waste management
	X	Active transport and mobility
	X	Shrinking our carbon footprint
	X	Other
Purpose of tool Stages where it can be used		Awakening
	X	Understanding
	X	Enlightenment – Action
		Advocacy
		Evaluation
		Other
Language	X	Dutch
	X	English
	X	Estonian
	X	German
	X	Greek



	X	Italian
	X	Lithuanian
	X	Macedonian
	X	Other

### 3 Description

#### What is this tool about

ArcGIS Survey123 is an app which allows you to gather data. It is based on a simple and intuitive form-centric data gathering. Data can be collected using web or mobile devices, even when disconnected from the internet.

#### For which purposes is it used

Apps such as ArcGIS Survey123 enable organisations to rapidly build and deploy data-gathering forms.

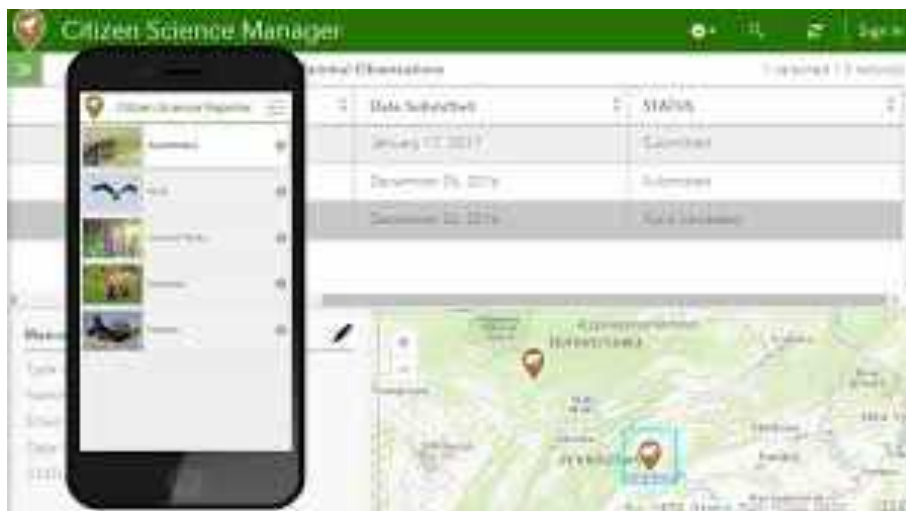


Image Source: <https://lecturewithgis.co.uk/pages/citizenscience>

#### Limitations of the tool

The free trial has limited timeframe and options.

To make best use of Survey123 you need to also use ArcGIS Online (<https://www.arcgis.com/index.html>) to store save and analyse your data.

## 4 When and how to use this tool

- **Preparation:**

Prepare your survey aims and questions you want to ask.

Create your account or log in to the organisational account for ArcGIS Survey 123.

- **Activity:**

*To create and configure your survey*

1. *In a web browser, go to the Survey123 website. ...*
2. *Click Sign in and sign in with your account. ...*
3. *Click New survey. ...*
4. *In the Using the web designer section, for Blank survey, click Get started. ...*
5. *On the ribbon, next to Untitled survey, click the Edit survey info button.*

- **Follow-up about what to do after use:**

Once the data has been collected it can be viewed and analysed using ArcGIS Online, another tool. Find out more at

## 5 Material needed

A mobile device with or without internet connection is needed to collect data on the survey you have created. A free trial version is available and the tools is free for schools and non-profit organisations.

## 6 Other resources

### Links:

ArcGIS Survey123 <https://www.esri.com/en-us/arcgis/products/arcgis-survey123/overview>

Downloads <https://www.esri.com/en-us/arcgis/products/arcgis-survey123/downloads>

Tutorials <https://learn.arcgis.com/en/projects/get-started-with-arcgis-survey123/>

Free trial <https://www.esri.com/en-us/arcgis/products/arcgis-survey123/trial>

### Videos:

Creating and designing a survey <https://www.youtube.com/watch?v=fqw71JjhWMc>



Other videos

<https://www.youtube.com/playlist?list=PLGZUzt4E4O2L7h2PdpL7st93nURZAW58d>

**Articles/blogs:**

The Survey123 App: Enhancing the Citizen Science Experience

<https://www.nps.gov/articles/survey123.htm>

Active Learning, Citizen Science and Research with ArcGIS Survey123

<https://blogs.stthomas.edu/stelar/2021/03/25/active-learning-citizen-science-and-research-with-survey123/>

Accelerate citizen science with ArcGIS <https://lecturewithgis.co.uk/pages/citizenscience>

My First Survey example

<https://survey123.arcgis.com/share/f2093d08a49a4cb79d4093c1ba57a859>

